

Our mission is to advance knowledge and improve health through patient care, research, and the education of trainees in an inclusive culture that embraces diversity, fosters innovation, stimulates critical thinking, supports lifelong learning, and sustains our legacy of excellence.

FACTS & FIGURES

THE MEDICAL REVOLUTION IN MOTION

2019

PENN MEDICINE IS...

THE UNIVERSITY OF PENNSYLVANIA HEALTH SYSTEM AND
THE RAYMOND AND RUTH PERELMAN SCHOOL OF MEDICINE



Home of the
1ST HOSPITAL
in the United States,
founded in 1751

PATIENT CARE

ON THE FOREFRONT OF MEDICINE

Penn Medicine's physicians, nurses, and staff provide exceptional, personalized care to patients with a wide range of medical conditions. Using state-of-the-art equipment and data science, our doctors and nurses work together to ensure that patients' needs are addressed from multiple perspectives. Pharmacists, social workers, as well as nutrition and rehabilitation professionals are all part of the care team.

RESEARCH

LEADERS IN RESEARCH

Penn Medicine's researchers take an interdisciplinary approach to better understand the fundamental mechanisms of disease, which leads to more precise and personalized treatments. Faculty from dozens of institutes, centers, and departments work in multidisciplinary teams spanning the 11 other schools at the University of Pennsylvania, including experts in informatics, bioengineering, and health policy.



Recipients of over
\$425M
of National Institutes of
Health funding
IN FY18



**1ST MEDICAL
SCHOOL**
in the United States

EDUCATION

TRAILBLAZERS IN MEDICAL EDUCATION

The Perelman School of Medicine — established in 1765 — is consistently ranked in the nation's top academic medical schools by *U.S. News & World Report*. Penn Medicine offers students an innovative, comprehensive curriculum that prepares them to become leading physicians and scientists in the United States and around the world. The community of alumni numbers over 24,000 living and working across the globe.

COMMUNITY SERVICE

IMPROVING HEALTH IN OUR LOCAL NEIGHBORHOODS

Supporting the community is a cornerstone of Penn Medicine's mission. Every day, physicians, nurses, students, and staff volunteer their time and knowledge to serve vulnerable populations. They operate free neighborhood clinics, help low-income residents manage medical appointments and wellness efforts, provide education and mentorship to youth, and conduct other outreach initiatives. Penn Medicine also provides millions of dollars in care for undeserved patients each year.



400+
service initiatives funded
by CAREs grants

A GROWING FOOTPRINT

CLINICAL FACILITIES



Penn Medicine includes six acute-care hospitals and hundreds of outpatient locations throughout the region, as well as educational facilities at the Perelman School of Medicine.



THE HOSPITAL OF THE UNIVERSITY OF PENNSYLVANIA

is Penn Medicine's largest hospital. HUP is a busy inpatient hub for cancer, neurosciences, cardiac care, and many other specialties. It is also the oldest university-owned teaching hospital in the country.



PENN PRESBYTERIAN MEDICAL CENTER

is a renowned center for cardiac care and ophthalmology. Its campus includes the Musculoskeletal Center's outpatient facility at Penn Medicine University City and the Pavilion for Advanced Care, home to Penn Medicine's Level 1 Regional Resource Trauma Center.



PENNSYLVANIA HOSPITAL

is the nation's first hospital, cofounded by Benjamin Franklin in 1751. Today its outstanding clinical programs include the Spine Center, the Center for Transfusion-Free Medicine, orthopaedics, maternity and newborn services, and behavioral health. The campus includes Penn Medicine Washington Square, the hospital's outpatient facility.



CHESTER COUNTY HOSPITAL

is a hospital campus in West Chester, specializing in heart and vascular care, cancer, and orthopaedics, with satellite locations in Exton, West Goshen, New Garden, Jennersville, Kennett Square, and West Grove.



LANCASTER GENERAL HEALTH

includes the Lancaster General Hospital, the Women & Babies Hospital, and a network of more than 60 outpatient facilities and physician practices in Lancaster, Chester, and Lebanon counties.



PENN MEDICINE PRINCETON HEALTH

joined Penn Medicine in 2018 and is among the most comprehensive healthcare systems in New Jersey, including facilities offering acute-care hospital services, behavioral healthcare, ambulatory surgery, and wellness services.



The Hospital of the University of Pennsylvania and Penn Presbyterian Medical Center was named to the prestigious Honor Roll list by U.S. News & World Report.

CARE CLOSE TO HOME

EASILY ACCESSIBLE, TOP-RATE CARE ACROSS THE REGION

THE PERELMAN CENTER FOR ADVANCED MEDICINE is a state-of-the-art outpatient facility, with diagnostic and treatment facilities for cancer, neurological, and cardiac conditions, among other types of specialty care.

PENN MEDICINE RITTENHOUSE includes a rehabilitation facility, a long-term acute-care specialty hospital, and an inpatient hospice.

MULTISPECIALTY AMBULATORY FACILITIES are located throughout our region, offering convenient access to care across many disciplines, as well as laboratory testing and radiology services. Sites include:

- BUCKS COUNTY
- CHERRY HILL
- RADNOR
- SOUTHERN CHESTER COUNTY
- UNIVERSITY CITY
- VALLEY FORGE
- WASHINGTON SQUARE
- WOODBURY HEIGHTS

GOOD SHEPHERD PENN PARTNERS is the post-acute care provider for Penn Medicine. It provides inpatient and outpatient physical rehabilitation and specialized long-term acute care throughout southeastern Pennsylvania and southern New Jersey.

PRINCETON HOUSE BEHAVIORAL HEALTH and **LANCASTER BEHAVIORAL HEALTH HOSPITAL** provide a range of inpatient and outpatient services for patients with mental health, substance abuse, or co-occurring disorders.



NEW BUILDING FOR THE FUTURE FACILITIES

THE PAVILION

The Pavilion will be an innovative hospital facility to support Penn's world-renowned researchers, clinicians, and faculty.

- Patient rooms are built to flex between standard & ICU set-up, if needed, to meet future care needs
- Hybrid operating rooms for surgeries & interventional procedures
- Telemedicine functionality allows remote monitoring & consultations
- In-room technology strengthens communication between patients, families, & care teams

A NEW BENCHMARK

2021
opening date



500
private patient rooms



\$1.5B
facility



47
operating rooms



PENN MEDICINE RADNOR

Construction for the \$200 million advanced outpatient center in Radnor started in October 2018. The state-of-the-art facility will expand options for patients to receive advanced care close to home. The center is set to open in Spring 2020.

EXPANDING ACCESS TO CARE

167
exam rooms



18
departments



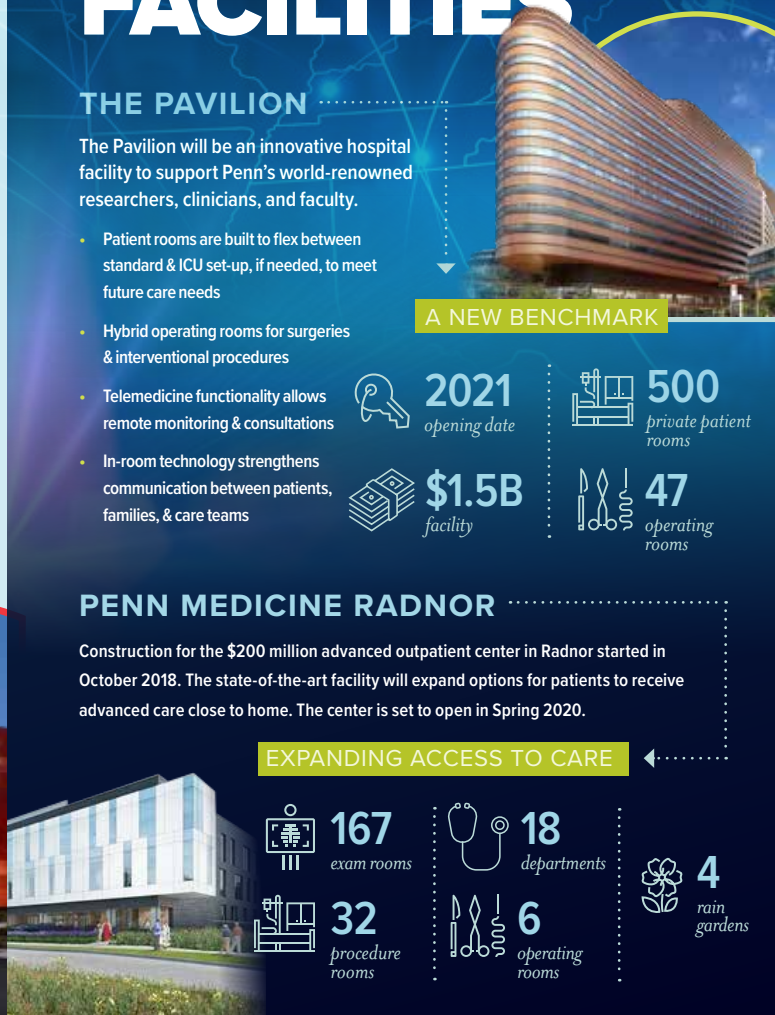
32
procedure rooms



6
operating rooms



4
rain gardens





PATIENT CARE

NEW FRONTIERS AND ADVANCED OPTIONS

From emergency departments to inpatient units to outpatient clinics across the region, our physicians, nurses, pharmacists, social workers, and other members of the care team put patients first in every setting. We're leveraging telemedicine, mobile apps, and remote monitoring technologies to provide fresh options that offer patients more convenience and enhance their safety—both when they're in our facilities and at home.

Penn Medicine's Abramson Cancer Center, designated as a Comprehensive Cancer Center by the National Cancer Institute since 1973, is a world leader in cancer research, patient care, and education. At the Roberts Proton Therapy Center, the largest integrated radiation oncology center in the world, patients are treated with this highly precise form of radiation, which eradicates tumors while sparing healthy surrounding tissue and eliminating many side effects of conventional radiation treatment. Many of our physicians also care for patients at Children's Hospital of Philadelphia and the Corporal Michael J. Crescenz VA Medical Center.

BETTER HEALTH, LOWER COSTS

Community health workers (CHWs) in Penn's IMPaCT program are trained local residents who provide tailored care for high-risk patients



8,000+

patients supported in Philadelphia



Research reveals a

65%

reduction in total hospital days



1,000+

organizations across the nation accessed the CHW toolkit

HOPE FOR INHERITED CANCERS

WITH THE BASSER CENTER FOR BRCA

WORLD'S 1ST COMPREHENSIVE CENTER for the research, treatment, and prevention of cancers related to BRCA gene mutations



9,000+

visits with genetic counselors



30

researchers funded at Penn



3,000

BRCA1/2 carriers enrolled in research registry



17

institutions funded worldwide



propelled by

\$80M

in philanthropic gifts

(Cumulative data since 2012)

CARE IN THE COMFORT OF HOME

PENN HOME CARE AND HOSPICE provides skilled nursing services, rehabilitation therapies, palliative care, infusion therapy, and more



32,700

patient admissions



241,400+

infusions provided



528,000+

visits



960+

patients supported via telehealth

(Data from FY18)

TOMORROW'S CURES TODAY

RESEARCH

Penn Medicine is an internationally recognized leader for discoveries that advance science and patient care. Seventy-one Penn Medicine researchers are Members of the National Academy of Medicine of the National Academy of Sciences, one of the highest honors in medicine.

The fundamental and discovery science and clinical research from Penn Medicine's laboratories and hospitals improves care for a wide range of medical conditions and provides the foundation for the next generation of therapies. The culture and campus of the University of Pennsylvania encourages close collaboration between scientists and clinicians, exemplified by its dozens of interdisciplinary clinical and research institutes, centers, and programs.

ACCELERATING THE TRANSFORMATION OF HEALTH CARE

CENTER FOR HEALTH CARE

INNOVATION



35

Innovation Accelerator projects since 2013



4,600+

ideas for innovative solutions crowdsourced from frontline staff since 2012



60 Million

data points in the Center for Digital Health's Social Mediomie since 2015



50,000

medications prescribed as generic instead of brand due to a nudge since 2014

COLLABORATIVE RESEARCH

BY THE NUMBERS



1,600+

students & postdocs



6,500+

faculty & staff



28

basic & clinical departments



25

free-standing interdisciplinary centers & institutes



22

biomedical research service cores, from bioinformatics to next generation sequencing

UNCOVERING TREATMENTS FOR THE MOST CHALLENGING DISEASES

THE IMMUNOREVOLUTION

500+

patients enrolled in clinical trials of personalized T-cell therapies

20

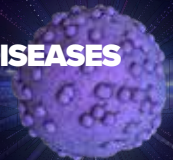
year record of first-in-human trials

3,000+

cell products manufactured for more than

1,200

patients



EDUCATION

TRAINING FUTURE MEDICAL REVOLUTIONARIES



The Perelman School of Medicine has an international reputation for innovative training programs in areas ranging from leadership to global health. Its groundbreaking curriculum has set a new standard for medical education nationwide and is a model for other academic medical schools. The curriculum integrates basic sciences and clinical experience, fosters interdisciplinary teamwork, and is built on a foundation of evidence-based medicine and patient-centered care.

FORWARD THINKING LEADERSHIP TRAINING

Penn Medicine and The Wharton School joined forces to launch an executive health care leadership program, offering a more diverse set of skills to lead in a new era of medicine.

PERELMAN SCHOOL OF MEDICINE



190
of these are enrolled in MD/PhD programs across Penn

INCOMING CLASS

2018/2019



53%
female



47%
male



33%
majored in non-science fields

28%
underrepresented minorities in medicine

23
states represented

WHAT'S NEXT FOR THE GRADUATING CLASS OF 2018?

159
graduates

20
states + DC where graduates will train

42
graduates training at Penn, CHOP, or the Scheie Eye Institute

58%
completed certificates or other advanced degrees

GRADUATE MEDICAL EDUCATION



972
residents

372
fellows



82
residency and fellowship programs



38
fellowships sponsored by departments

TOP SPECIALTIES



Internal Medicine



General Surgery



Pediatrics



GLOBAL ENGAGEMENT

IMPROVING HEALTH AROUND THE WORLD

The Center for Global Health was launched in 2015 to synthesize and expand Penn Medicine's efforts to improve worldwide health equity. The Center's vision for the future is to build a healthier world by training tomorrow's leaders, addressing global health disparities, supporting regional centers of engagement in underserved locations, and uniting the Penn global health community through workshops, pilot projects, and seminars.

Among the many international projects, two stand out as the foundation of Penn's involvement in global health. For more than 10 years, the Guatemala-Penn Partnership has focused on public health, medical care, as well as projects in local anthropology and archaeology. The 20-year-old Botswana-UPenn Partnership encompasses well-established programs related to HIV/AIDS, heart disease, and the education of local health care professionals.



PENN MEDICINE LONDON

The new initiative brings Penn's world-class experts and care to United Kingdom and European Union patients through referrals and telemedicine, as well as opportunities for collaboration with UK medical schools.

CENTER FOR GLOBAL HEALTH

BY THE NUMBERS



162

Global Health activities worldwide

in



65

countries



265

Penn trainees involved in Global Health activities



81

international students involved in global health activities

VINGROUP-PENN ALLIANCE

In June 2018, the Vingroup-Penn Alliance was established to improve health care and create new undergraduate and graduate medical training programs in Vietnam. The alliance is positioned to extend Penn's global reach through the creation of a new Center of Regional Engagement in Southeast Asia (based in Vietnam).





COMMUNITY SERVICE

DEVOTING SKILL AND COMPASSION TO THOSE IN NEED

Every day, physicians, nurses, medical students, researchers, and staff lend their time, skills, and knowledge to help the communities the health system serves, often as volunteers outside of their work.

Penn Medicine's CAREs grant program supports faculty, students, and staff who volunteer in community-based programs from metropolitan Philadelphia to rural Lancaster and Chester counties to the suburbs and shore communities of Southern New Jersey. Since CAREs was established in 2011, it has provided grants to over 400 service initiatives throughout the region, including programs in community centers, farmer's markets, and places of worship.

GIVING BACK



\$1.75M

raised by Penn's Way campaign



\$129.7M

in research support and community health improvement services



\$279.7 M

in charity and underfunded care for Medicaid families



\$116.1M

in physician training support

IN THE NEIGHBORHOOD

IMPROVING THE HEALTH AND WELL-BEING OF OUR COMMUNITIES



Perelman School students and trainees volunteer with the **EDUCATIONAL PIPELINE PROGRAM**, an initiative supporting high school students from underrepresented backgrounds who aspire to medical careers.



LANCASTER GENERAL HEALTH partners with three local elementary schools to offer free school-based health centers, providing a convenient location for students to access medical care.



Princeton Health's annual **KIDS MARATHON** promotes regular physical activity by encouraging young people to cover 26.2 miles over the course of 10 weeks.



THE MOBILE CPR PROJECT, a public health initiative which teaches free hands-only CPR, brings lifesaving training to schools, offices, community centers, and more.



FREE FLU VACCINE CLINICS from Chester County Hospital protect the homeless and people living in poverty from the flu.

AN ENGINE FOR PROGRESS

ECONOMIC DEVELOPMENT

► Penn Medicine is the top health care employer in the city of Philadelphia



38,000
jobs in
Pennsylvania



3,800
jobs in
New Jersey



\$50M
tax revenue paid
in Philadelphia



\$3.3B
in capital
investment since
2008

PENN ASSIST



Penn Medicine is a partner in the training program that helps put Philadelphia high school graduates on the job at some of the region's most visionary building projects—including the Pavilion. The initiative started last year to teach the skills needed for careers in the building trades, and it's also making strides to improve workforce diversity.

LEADING WITH DISTINCTION

AWARDS & RECOGNITION

U.S. NEWS & WORLD REPORT



Penn Medicine hospitals ranked among the top hospitals in the nation by *U.S. News & World Report*, achieving Honor Roll status and top rankings in 12 clinical specialties. All six hospitals netted honors.

HOSPITAL OF THE UNIVERSITY OF PENNSYLVANIA
& PENN PRESBYTERIAN MEDICAL CENTER

 **#1 Hospital**
in Pennsylvania

 **#1 Hospital**
in the Philadelphia region

NATIONAL & REGIONAL RECOGNITION

LANCASTER GENERAL HOSPITAL
honored with the American Hospital Association's 2019 Foster G. McGaw Prize for Excellence in Community Service

CHESTER COUNTY HOSPITAL
received the American College of Cardiology's HeartCARE Center National Distinction of Excellence designation

PENNSYLVANIA HOSPITAL
is the only hospital in the region to receive Perinatal Care Certification from The Joint Commission

PRINCETON MEDICAL CENTER
recognized as a Best Regional Hospital in central New Jersey by *U.S. News & World Report*

A LEADING EMPLOYER



#6
on *Forbes* magazine's annual "BEST EMPLOYERS IN AMERICA" list

#1
HEALTH CARE EMPLOYER and top employer in PA for large employers



#2
on *Forbes* magazine's first-ever "AMERICA'S BEST EMPLOYERS FOR WOMEN" list

#1
in the region and **TOP HEALTH CARE EMPLOYER** for women

ADDITIONAL AWARDS & ACCOLADES



MAGNET

All Penn Medicine hospitals have achieved Magnet status from the American Nurses Credentialing Center, recognizing nursing excellence



478
physicians included in *Philadelphia Magazine's* "TOP DOCS" list



Penn Medicine was named by the *Philadelphia Business Journal* as the **2018 HEALTH CARE INNOVATOR**



The Perelman School of Medicine has been ranked among the **TOP TEN MEDICAL SCHOOLS** in the country by *U.S. News & World Report*, for more than 20 years

PENN MEDICINE PROFILE

FISCAL YEAR 2018



\$7.8 BILLION

in Annual Operating Revenue

RESEARCH & EDUCATION

Total Sponsored Research.....	\$813.9 million
NIH Awards	\$425 million
PA State Research Funding	\$5.3 million
Licensing Revenue.....	\$69.4 million
New Patents Awarded	76
Full-Time Faculty (includes CHOP) ..	2,624
MD Students.....	766
PhD Students.....	671
MD/PhD Students.....	190
Residents & Fellows (HUP, PPMC, PAH)	1,344
Postdoctoral Fellows	782

PHILANTHROPY

Gifts.....	\$219 million
Donors.....	24,023
Alumni Giving Participation.....	26.25%

A GROWING FOOTPRINT

Penn Medicine is powered by a talented and dedicated workforce of more than 40,000 people, all committed to our mission of providing the best care for patients across our region—from our urban main campus to hospitals west of Philadelphia, in Chester and Lancaster Counties, east to Princeton, NJ, and in our outpatient facilities offering care at sites in between.

We also have alliances with top community health systems across both Southeastern Pennsylvania and Southern New Jersey, creating more options for patients no matter where they live.



- HOSPITALS
- MULTISPECIALTY OUTPATIENT SITES
- ALLIANCES
 - Virtua Health System
 - Mercy Health System & St. Mary Medical Center
 - Grand View Health

PENN MEDICINE PROFILE

FISCAL YEAR 2018



\$7.8 BILLION

in Annual Operating Revenue

RESEARCH & EDUCATION

Total Sponsored Research.....	\$813.9 million
NIH Awards	\$425 million
PA State Research Funding	\$5.3 million
Licensing Revenue.....	\$69.4 million
New Patents Awarded	76
Full-Time Faculty (includes CHOP) ..	2,624
MD Students.....	766
PhD Students	671
MD/PhD Students.....	190
Residents & Fellows (HUP, PPMC, PAH)	1,344
Postdoctoral Fellows	782

PHILANTHROPY

Gifts.....	\$219 million
Donors.....	24,023
Alumni Giving Participation.....	26.25%

	TOTAL	HUP	PAH	PPMC	CCH	LGH	PMPH	PSOM
Licensed Beds	2,940	805	475	375	244	612	429	
Physicians ¹	7,163	2,127	910	1,273	592	954	1,307	
Adult Admissions	135,904	35,182	19,069	17,601	13,821	32,186	18,045	
Outpatient Visits ²	5,747,434	1,937,021	219,288	249,845	451,530	1,194,834	313,110	
ED Visits	359,568	62,309	38,002	47,184	45,161	117,591	49,321	
Births	19,128	4,421	5,231	--	2,969	4,294	2,213	
Employees ³	41,368	7,585	2,878	2,543	2,308	8,650	3,342	6,529 ⁴

KEY TO SUPERSCRIPTS:

- (1) Includes physicians with privileges at >1 hospital
- (2) Includes CCA/CHCA, GSPP, HCHS
- (3) Includes CCA, Corp, CPUP, HCHS
- (4) Includes staff and full-time faculty

KEY TO ABBREVIATIONS:

- CCA: Clinical Care Associates
- CCH: Chester County Hospital
- CHCA: Clinical Health Care Associates
- CHOP: The Children's Hospital of Philadelphia
- CPUP: Clinical Practices of the University of Pennsylvania
- ED: Emergency Department
- GSPP: Good Shepherd Penn Partners
- HCHS: Home Care & Hospice Services
- HUP: Hospital of the University of Pennsylvania
- LGH: Lancaster General Health
- PMPH: Penn Medicine Princeton Health
- PPMC: Penn Presbyterian Medical Center
- PAH: Pennsylvania Hospital
- PSOM: Perelman School of Medicine