



Penn Medicine

FACTS & FIGURES 2016



PENN MEDICINE IS...



PATIENT CARE

Penn Medicine's physicians, nurses, and staff provide exceptional, personalized care to patients with a wide range of medical conditions, including cancer, heart and lung disease, neurological disorders, diseases of aging, and orthopaedic injuries, as well as care for newborns. Using state-of-the-art equipment, our highly trained doctors work together to ensure that patients' needs are addressed from multiple perspectives, including disease specialists, pharmacists, social workers, and rehabilitation professionals.



EDUCATION

Established in 1765 as the nation's first medical school, the Perelman School of Medicine is now over 250 years old. The School has ranked among the top five medical schools in the United States for the past 18 years, according to *U.S. News & World Report's* survey of research-oriented medical schools. Penn Medicine continues to provide its students with an innovative, comprehensive curriculum that prepares them to become leading physicians and scientists in a broad array of fields, both at home in the United States and around the world.

THE RAYMOND AND RUTH PERELMAN SCHOOL OF MEDICINE AND THE UNIVERSITY OF PENNSYLVANIA HEALTH SYSTEM.



RESEARCH

Penn Medicine is consistently among the nation's top recipients of funding from the National Institutes of Health. Penn's physicians and scientists take an interdisciplinary approach to understanding the fundamental mechanisms of disease, which leads to new strategies for precise and personalized treatments. Faculty from dozens of institutes, centers, and departments work with their colleagues from the 11 other schools of the University of Pennsylvania in many allied fields, including informatics, bioengineering, and health policy.



COMMUNITY SERVICE

Improving the health of people living throughout the Philadelphia region is a cornerstone of Penn Medicine's mission. Every day, physicians, nurses, medical students, and staff volunteer their knowledge, skills, and time to serve vulnerable populations. They operate free neighborhood clinics, help low-income residents obtain primary care, and run after-school programs for grade school students, among many other efforts.

PENN MEDICINE PROFILE

FISCAL YEAR 2015

ANNUAL OPERATING REVENUE.....\$5.3 BILLION¹

RESEARCH & EDUCATION

Total Sponsored Program Awards.....	\$674 million
NIH Awards.....	\$373 million
State Research Funding	\$1.4 million ¹
New Patents Awarded.....	84
Licensing Revenue	\$41 million
Full-Time Faculty (includes CHOP)	2,190
MD Students.....	775
PhD Students.....	594
Residents & Fellows (HUP & PAH).....	1,290
Postdoctoral Fellows	704
MD/PhD students, all groups.....	186

PHILANTHROPY

Gifts.....	\$156 million
Donors.....	22,161
Alumni Participation.....	29%

PATIENT CARE

Licensed Beds

Physicians²

Adult Admissions

Outpatient Visits³

ED Visits

Births

Employees⁴

(1) Does not include LGH, which joined Penn Medicine in August 2015

(2) Includes physicians with privileges at 1+ hospitals

(3) Includes **CCA/CHCA**

(4) Includes **CCA, Corp, CPUP, HCHS**

(5) Includes FY15 data



TOTAL	HUP	PAH	PPMC	CCH	LGH ⁵	PSOM
2,503	789	496	331	257	630	
5,314	1,912	766	1,083	582	971	
118,445	34,653	19,601	15,388	13,521	35,282	
4,734,948	1,633,275	182,507	174,606	425,107	1,708,234	
295,736	61,436	32,299	40,374	45,317	116,310	
16,287	4,253	5,044	--	2,609	4,381	
31,235	6,716	2,648	2,179	2,480	7,581	3,334

KEY TO ABBREVIATIONS:

- CCA:** Clinical Care Associates
- CCH:** Chester County Hospital
- CHCA:** Clinical Health Care Associates
- CHOP:** The Children's Hospital of Philadelphia
- CPUP:** Clinical Practices of the University of Pennsylvania
- ED:** Emergency Department
- HCHS:** Home Care & Hospice Services

- HUP:** Hospital of the University of Pennsylvania
- LGH:** Lancaster General Health
- PPMC:** Penn Presbyterian Medical Center
- PAH:** Pennsylvania Hospital
- PSOM:** Perelman School of Medicine



CLINICAL FACILITIES AND PROGRAMS

PENN MEDICINE INCLUDES FIVE ACUTE-CARE HOSPITALS AND HUNDREDS OF OUTPATIENT CENTERS THROUGHOUT THE REGION, COMBINING FOR A TOTAL OF **9.7 MILLION** SQUARE FEET IN FACILITY SPACE.



HOSPITAL OF THE UNIVERSITY OF PENNSYLVANIA

is annually recognized as one of the nation's best by the *U.S. News & World Report* in its Honor Roll of best hospitals. The 2.4 million-square-foot complex consists of 15 interconnecting buildings and is a busy inpatient hub for cancer, neurosciences, cardiology care, and many other specialties.



PENN PRESBYTERIAN MEDICAL CENTER

is consistently recognized as a center of excellence for cardiac care, ophthalmology, and the Musculoskeletal Center located at the new Penn Medicine University City. Its 617,900-square-foot campus is spread over 10 buildings, including the new Pavilion for Advanced Care, which is now home to Penn Medicine's Level I Regional Resource Trauma Center.



PENNSYLVANIA HOSPITAL is the nation's first hospital, cofounded by Benjamin Franklin in 1751. Today its many outstanding clinical programs include the Spine Center, orthopaedics, the Center for Bloodless Medicine and Surgery, maternity and newborn services, cardiac care, neurosciences, hematology/oncology, and behavioral health. PAH comprises a 1.1 million-square-foot campus of 15 buildings, including Penn Medicine Washington Square, the hospital's outpatient facility.



LANCASTER GENERAL HEALTH, the newest Penn Medicine entity, includes the Lancaster General Hospital, the Women & Babies Hospital, and a network of more than 60 outpatient facilities and physician practices in Lancaster, Chester, and Lebanon counties, for a total of 1.3 million square feet in facility space.



CHESTER COUNTY HOSPITAL includes a 553,430 square-foot hospital complex in West Chester and satellite locations in Exton, West Goshen, New Garden, Jennersville, Kennett Square, and West Grove.

THE PERELMAN CENTER FOR ADVANCED MEDICINE is a state-of-the-art outpatient facility, with diagnostic and treatment facilities in close proximity to cancer care, neurosciences, and cardiac services, among other specialty-care teams.

THE ROBERTS PROTON THERAPY CENTER is the largest integrated radiation oncology center in the world. It uses beams of protons traveling at nearly light speed to eradicate tumors and spare healthy surrounding tissue, eliminating many side effects of conventional cancer therapies.

THE ABRAMSON CANCER CENTER has more than 100,000 outpatient visits each year and more than 21,000 participants enrolled in clinical trials. Since 1973, it has been designated a Comprehensive Cancer Center by the National Cancer Institute, one of 45 such centers in the nation.

THE CLINICAL CARE ASSOCIATES AND CLINICAL HEALTH CARE ASSOCIATES OF NEW JERSEY are networks of primary and specialty care physicians, with more than 50 locations throughout the Philadelphia region.

PENN MEDICINE COMMUNITY PRACTICES are located in Valley Forge, Radnor, Bucks County, Cherry Hill, and Woodbury Heights.

PENN MEDICINE RITTENHOUSE includes a rehabilitation facility, a long-term acute-care specialty hospital, and an inpatient hospice.

PENN HOME CARE & HOSPICE SERVICES offers a full range of home health needs through Penn Wissahickon Hospice, Penn Care at Home, and Penn Home Infusion Therapy.



GOOD SHEPHERD PENN PARTNERS

offers rehabilitation and physical therapy at comprehensive facilities in southeastern Pennsylvania and southern New Jersey, including a specialty hospital at Penn Medicine Rittenhouse. The Penn Institute for Rehabilitation Medicine is accredited in inpatient rehabilitation, and specialty programs for amputees, brain injuries, stroke, and spinal cord injuries.

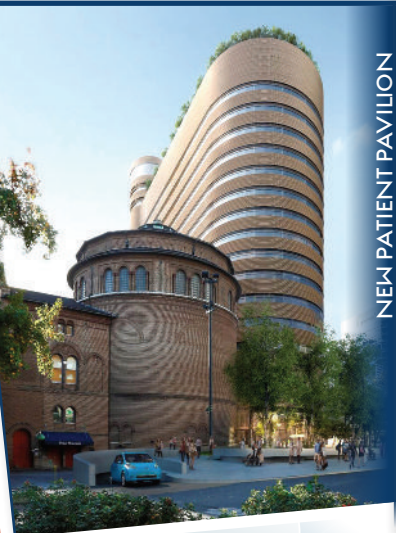
96 LICENSED BEDS

145,000 OUTPATIENT VISITS PER YEAR

14 PENN THERAPY & FITNESS LOCATIONS

1,800 ADMISSIONS TO THE SPECIALTY HOSPITAL AT RITTENHOUSE

PENN MEDICINE EXPANSIONS



NEW PATIENT PAVILION

NEW PATIENT PAVILION FOR THE HOSPITAL OF THE UNIVERSITY OF PENNSYLVANIA

Plans are underway for an inpatient pavilion on the site of Penn Tower, with over 500 beds and more than 50 operating rooms anticipated. The pavilion will feature all private rooms, the latest technology for patient monitoring, and integrated information systems to enhance communication across care teams.

COMMUNITY PRACTICE EXPANSIONS

CHERRY HILL

A new **150,000** SQUARE-FOOT outpatient medical facility will feature extended hours across an array of specialties, including radiation oncology.

RADNOR

Plans are in progress for a new **250,000** SQUARE-FOOT facility, offering outpatient surgery in numerous specialties, as well as expanded cancer services.



RADNOR
PENNSYLVANIA



CHERRY HILL
NEW JERSEY



RESEARCH

COLLABORATIVE RESEARCH: BY THE NUMBERS

1,400+
STUDENTS & POSTDOCS

5,200+
FACULTY & STAFF

28
BASIC & CLINICAL
DEPARTMENTS

24
INTERDISCIPLINARY
CENTERS & INSTITUTES



Penn Medicine is an internationally recognized leader in discoveries that advance science. Sixty-five Penn Medicine researchers are Members of the National Academy of Medicine (formerly known as the Institute of Medicine) of the National Academy of Sciences, one of the highest honors in medicine. The basic science and clinical research findings emerging from Penn Medicine's laboratories and hospitals improve care for a wide range of medical conditions and provide the foundation on which the next generation of therapies will be developed. The culture and campus of the University of Pennsylvania encourage close collaboration between basic scientists and clinicians, exemplified by its dozens of interdisciplinary clinical and research institutes, centers, and programs.





BIOMEDICAL GRADUATE STUDIES

30 YEARS OF EDUCATING
LIFE SCIENTISTS



2,000

STUDENTS WHO RECEIVED BGS
DOCTORATES IN PAST 30 YEARS



600+

FACULTY MEMBERS IN
7 PENN SCHOOLS WHO
TEACH BGS CLASSES



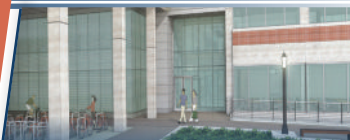
15+

SPECIALTIES IN
BGS PROGRAM

2015 BGS STUDENT PROFILE

GRADUATES OF
77 COLLEGES & UNIVERSITIES
61% FEMALE 39% MALE
25% UNDER-REPRESENTED
MINORITIES
NATIVES OF 6 COUNTRIES

RENOVATIONS FOR A NEW ERA OF RESEARCH



STEMMLER HALL

Renovation from outmoded education and research building to LEED Silver Standard research labs for neuroscience, microbiology, and orthopaedic surgery, among other disciplines.

\$120 MILLION IN RENOVATION COSTS

251,000 SQUARE FEET

BUILT IN 1978

EXPECTED TO BE COMPLETE IN **EARLY 2018**



RICHARDS BUILDING

Renovation of historic, Louis Kahn-designed laboratory into an office-based research facility, including the Institute for Biomedical Informatics, cognitive neuroscience, and computational neurology.

\$30 MILLION IN RENOVATION COSTS FOR FIRST PHASE

107,000 SQUARE FEET

BUILT IN 1962

NAMED A NATIONAL HISTORIC LANDMARK IN 2009

EXPECTED TO BE COMPLETE IN **EARLY 2019**

EDUCATION

MEDICAL AND DUAL DEGREE PROGRAMS

775

MEDICAL STUDENTS ENROLLED IN THE
PERELMAN SCHOOL OF MEDICINE, WITH

186

OF THESE STUDENTS
ENROLLED IN MD/PHD PROGRAMS
ACROSS PENN



The Perelman School of Medicine is at the forefront of medical education with an innovative curriculum and integrated approach to learning, using small groups, case-based and team-focused training, and advanced technology. Students also have the flexibility to combine their medical education with master's and doctoral degrees, specialty certificates, and global health and community service. The school also offers many opportunities for practicing physicians from across the world to stay abreast of the latest techniques, procedures, and research.





A LIFETIME OF LEARNING



36

PHYSICIANS SELECTED TO PENN'S ACADEMY OF MASTER CLINICIANS SINCE 2013 LAUNCH



9,398

RESIDENTS AND FELLOWS WHO HAVE TAKEN CLASSES AT THE CLINICAL SIMULATION CENTER



500

COURSES OFFERED ANNUALLY BY THE OFFICE OF CONTINUING MEDICAL EDUCATION, REACHING:

370,000
PHYSICIANS

AND 150,000
OTHER HEALTH PROFESSIONALS

PROFILE OF INCOMING 2015/2016 ACADEMIC YEAR MEDICAL STUDENTS



47%
FEMALE
53%
MALE



15%
PA RESIDENTS

23% UNDERREPRESENTED MINORITIES

28% ASIAN

32% NON-SCIENCE MAJORS FOR UNDERGRADUATE DEGREE

36% GRADUATED FROM POST-BACCALAUREATE PROGRAMS BEFORE ENTERING MEDICAL SCHOOL



20 YEARS OF WHITE COATS

In 2015, the Perelman School of Medicine held its 20th annual White Coat Ceremony for 156 incoming students from 25 states and 65 colleges from around the country. This is the 250th class to enter the school, but the first to begin its training in the new Henry A. Jordan Medical Education Center.

PATIENT CARE



PENN MEDICINE TRAUMA PROGRAM: BY THE NUMBERS

2,240

PATIENTS CARED FOR ANNUALLY

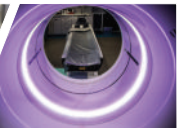
29

SURGICAL & MEDICAL
SPECIALTIES INVOLVED IN THE
CARE OF TRAUMA PATIENTS

97%

SURVIVAL RATE
OF TRAUMA PATIENTS

Beyond its main campus in Philadelphia, the University of Pennsylvania Health System (UPHS) cares for patients in hospitals and outpatient facilities from central Pennsylvania to the Jersey shore. UPHS also includes Penn Home Care and Hospice Services, and Penn Medicine physicians also work in partnership with their colleagues to see patients at The Children's Hospital of Philadelphia and the Philadelphia VA Medical Center.





CENTER FOR PERSONALIZED DIAGNOSTICS

Offers specialized genetic tests for diagnosing patients' cancer with greater precision compared with standard imaging tests and blood work



>4,000

CLINICAL AND RESEARCH
SAMPLES PROCESSED
TO DATE



75%

OF PATIENT TESTS FOUND
DISEASE-ASSOCIATED
MUTATIONS, REVEALING
POSSIBLE NEW
TREATMENT PATHWAYS



>100

GENES TESTED
USING 4 CUSTOM
GENE-SEQUENCING
PANELS FOR BLOOD
CANCERS AND
SOLID TUMORS

CARE MILESTONES IN 2015

1,000TH

DEEP BRAIN STIMULATION SURGERY
to treat Parkinson's disease
and other brain disorders

1,000TH

TRANSCATHETER AORTIC
VALVE REPLACEMENT PROCEDURE
to restore blood flow to the heart

Participation in nation's longest
multi-hospital kidney transplant
exchange ever:

25 TRANSPLANT CENTERS, with
68 PATIENTS — 34 DONORS and 34 RECIPIENTS



NATIONAL & REGIONAL RECOGNITION



- Penn Medicine again had the most physicians in the region featured on *Philadelphia* magazine's "Top Docs" list.
- The Abramson Cancer Center received an "exceptional" rating, the highest possible by the National Cancer Institute, in its five-year competitive research-support review. HUP, PPMC, and PAH were given three-year accreditation for the highest level of quality cancer care by the American College of Surgeons Commission on Cancer.



U.S. NEWS & WORLD REPORT RANKINGS

RANKED AMONG NATION'S TOP TEN

HUP/PPMC ranked 9th in the United States, according to the *U.S. News & World Report* annual "Best Hospitals" survey.

TOP 5

The Perelman School of Medicine is ranked among the top five medical schools in the country by *U.S. News & World Report*, for the 18th year in a row.

TOP 10

U.S. News & World Report ranked all five Penn Medicine acute-care hospitals among the top 10 in Pennsylvania.



- All five Penn Medicine acute-care hospitals received awards from the American Heart Association/American Stroke Association's "Get With the Guidelines" program for the highest standard of stroke care.
- 22 Clinical Care Associates practices received the highest designation from the National Committee for Quality Assurance for providing access to more efficient and better coordinated care.
- Penn Medicine hospitals were named Leaders in LGBT Healthcare Equality by the Human Rights Campaign.
- Information Services (IS) ranked in the nation's top 10 and first among health care entrants in the Information Week Elite 100. Penn Medicine IS was also named Most Wired and given the 2015 Innovator Award by the Health & Hospital Networks.
- All five Penn Medicine acute-care facilities achieved Magnet status from the American Nurses Credentialing Center.

GLOBAL ENGAGEMENT

Penn Medicine's programs reach beyond our institution to serve vulnerable populations in the Delaware Valley and those in need around the world.

Penn faculty research diseases, educate students, and treat patients in hospitals and mobile clinics, in partnership with other institutions, on five continents. Our community also comes together to support humanitarian and medical relief efforts across the globe.

The ten-year-old Guatemala-Penn Partnership, which draws on almost a century of Penn involvement in the country, includes public health, medical, anthropologic and archaeological activities and discoveries.

At more than 15 years old, the Botswana-UPenn Partnership focuses on programs encompassing HIV/AIDS, cervical cancer, heart disease, telemedicine, and the education of local health care workers.





The Center for Global Health (CGH) was launched in 2015 to improve worldwide health equity through enhanced awareness and access to care, discovery, and outcomes-based research, as well as comprehensive educational programs grounded in partnership. The CGH leadership program engages and fosters development of junior and senior faculty at Penn, in concert with partner institutions, to support bidirectional exchange and training. The global initiative program advances care and research focused on current and growing disease burdens, including oncology and women's health, and in accelerating the pace of innovation by rapidly adapting new technologies in global settings. The regional centers of excellence program, using a comprehensive team-oriented approach, integrates CGH education, care, and research missions with those of local governments, foundations, and academic institutions. Centers of excellence are located in Botswana and Guatemala, with plans to create a new effort in India. Each of these efforts engages trainees throughout Perelman School of Medicine departments, centers, and institutes, along with other allied schools at Penn.

AIDING THE COMMUNITY FROM WITHIN



Caring for the people living throughout Pennsylvania and New Jersey is Penn Medicine's primary mission. Every day, physicians, nurses, medical students, researchers, and staff volunteer their knowledge, skills, and time to benefit residents in the communities the health system serves. For example, Penn Medicine's CAREs grant program supports faculty, students, and staff who volunteer in community-based programs. Since the program was established in 2012, CAREs has provided grants to over 180 initiatives throughout the region, including food pantries, a breastfeeding support program, science-mentoring programs, and a trauma support group for teen girls.



GIVING BACK*

\$137 MILLION
IN CHARITY AND UNDERFUNDED
CARE FOR MEDICAID FAMILIES

\$78.3 MILLION
PHYSICIAN TRAINING SUPPORT

UPHS also provides \$101 million to support



\$38 MILLION
IN RESEARCH SUPPORT TO
STAFF AND FACULTY

\$1.6+ MILLION
RAISED BY PENN'S WAY CAMPAIGN,
\$900,000 OF WHICH WAS
DONATED FROM PENN MEDICINE
EMPLOYEES

PSOM research and education efforts.



** CCH & LGH are not included in the Giving Back data for FY15.*

ECONOMIC DEVELOPMENT*

A BROAD IMPACT

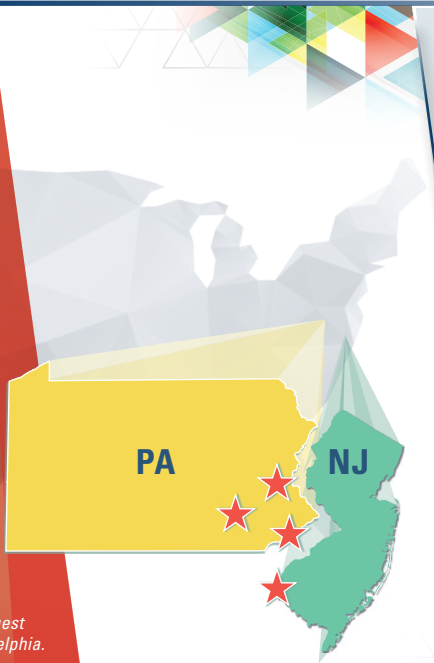
\$6.5 BILLION
TOTAL ECONOMIC IMPACT
IN PENNSYLVANIA

\$3.7 BILLION
TOTAL ECONOMIC IMPACT
ON THE PHILADELPHIA AREA

\$860 MILLION
TOTAL ECONOMIC IMPACT
IN NEW JERSEY

39,000
FULL-TIME JOBS IN
2013 IN PENNSYLVANIA

Penn Medicine, combined with the University of Pennsylvania, is the largest private employer in the City of Philadelphia.



* CCH & LGH are not included in the economic data for FY15.

IN THE NEIGHBORHOODS

Pennsylvania Hospital's **HALL-MERCER COMMUNITY BEHAVIORAL HEALTH CENTER** provides a safe place and outpatient care for people living with mental illness or developmental disabilities and their families.



Volunteers in the community and at W.B. Saul High School provide fresh vegetables to West Philadelphia residents via **MILL CREEK FARMS** and the non-profit A Little Taste of Everything.



The **GLAUCOMA BUS** provides eye screenings in West Philadelphia to help prevent vision loss among residents who do not have regular care by an ophthalmologist.



BIOEYES brings biology education into local schools and is sponsored by the Institute for Regenerative Medicine.



The **PIPELINE PROGRAM** allows West Philadelphia high school students to intern at Penn Medicine and obtain college credit.



Our mission is to advance knowledge and improve health through research, patient care, and the education of trainees in an inclusive culture that embraces diversity, fosters innovation, stimulates critical thinking, supports lifelong learning, and sustains our legacy of excellence.



Penn Medicine

DEPARTMENT OF COMMUNICATIONS

3535 Market Street, Suite 60 | Philadelphia, PA 19104
215.662.2560 | <http://www.ups.upenn.edu/news>